

~ Accident with human death caused by the collision between the train and a passerby, at the class 4 level crossing ~

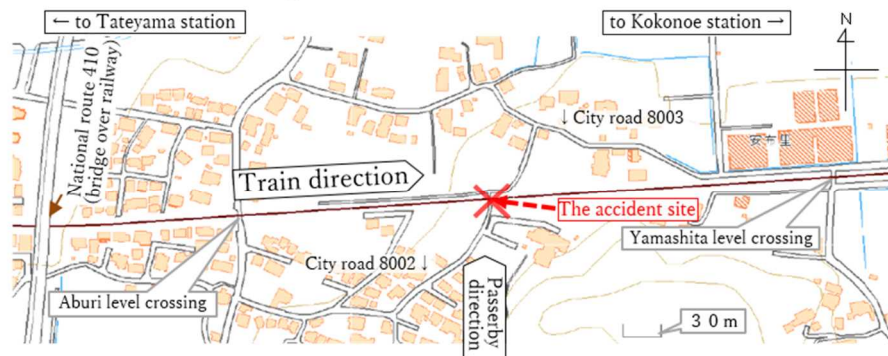
Railway operator : East Japan Railway Company
 Accident type : Level crossing accident
 Date and time : At about 22:18, February 27, 2018
 Location : Renkoji level crossing, class 4 level crossing without automatic barrier machine nor road warning device, at around 87,869 m from the origin in Soga station, between Tateyama station and Kokonoe station, single track, Uchibo Line, Tateyama City, Chiba Prefecture

<SUMMARY>

While the outbound Local 1123M train, started from Chiba station bound for Chikura station of East Japan Railway Company, was running between Tateyama station and Kokonoe station at a velocity of about 77 km/h, the driver of the train noticed a passerby entering Renkoji level crossing, then the driver applied an emergency brake, but the train hit the passerby.

The passerby was dead in the accident.

<Schematic drawing of the area around the accident site>



※ This figure was quoted from the map (Digital Land Web) published by Geospatial Information Authority of Japan, and revised.

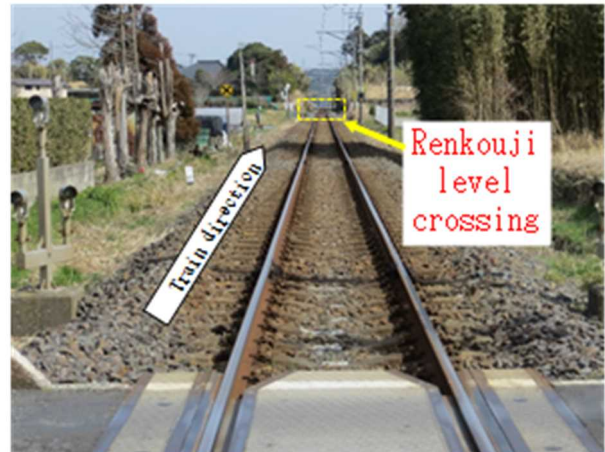
<The situation of Renkouji level crossing>
 (from the side where the pedestrian approached)



< The view from Renkouji level crossing to the down train approaching side >



< The view from the down train to Renkouji level crossing (from about 195 m this side) >



<PROBABLE CAUSES>

- It is highly probable that the accident occurred as the train hit the passerby who entered Renkouji level crossing, class 4 level crossing without automatic barrier machine nor road warning device, in the situation that the train was approaching.
- It could not be determined why the passerby entered the level crossing in the situation that the train was approaching the level crossing, because the passerby was dead in the accident.

<EXPECTED MEASURES TO PREVENT THE RECURRENCE>

- The class 4 level crossing, that is not equipped with the automatic barrier machine nor the road warning device, should be abolished or should be equipped with the level crossing protection device. The relevant persons such as the railway operators, the road administrators, the regional inhabitants, etc., are expected to discuss on the abolishment or the preparation of the level crossing protection devices, decide the policy as fast as possible, and promote the concrete measures, considering the occurrence of the accident and the situation around the level crossing.